



CALA HOMES @ WATERFRONT PLAZA

Neighbours Newsletter – 01st November 2018

With the works to remove the existing grass mounds now complete we would like to keep you up to speed of what works will be carried out in the coming months and will endeavour to provide an update on a quarterly basis.

Works carried out to date:

- Removal of existing grass mounds from site (approx 12000m³) and transported to licensed land fill in order for us to prepare the ground for future foundation works
- Reduction of existing ground level to prepare for upcoming foundation installation. Again, all material exported to licensed land fill in compliance with regulations.
- Removal of historical concrete foundations which had been left in situ on demolition of the relic structures. This material has been banded and crushed which will be re-used on site for various tasks (road sub-structure, temporary haul roads, piling platform etc) in order to reduce need to import structural aggregates and meet our sustainability targets.

Works to be carried out in next quarter:

- Erection of a full site perimeter security hoarding. We will form a few viewing points for anyone who might have an interest in the general goings on of site activity.
- Formation of a new temporary site access off Victoria Quay. This has been approved by City of Edinburgh Council due to restrictions and will be active approx mid November with the existing access off Ocean Drive closed.
- City of Edinburgh Council have also granted a TTRO (temporary traffic regulation order) on Victoria Quay due to the necessary works we are required to undertake to service our site with drainage / gas, water & electricity. We are unable to confirm an exact date however the council will display notices on the surrounding streets (usually on lamp posts) however we will issue a date for the works to be carried out as a courtesy as soon as we are made aware of the date.
- Continuation of on site concrete crushing.
- Commencement of permanent road & sewer installation. Please refer to attached drawing for site layout purposes.
- Block A & Block B piled foundation installation. This will entail driving steel tubular pile into the ground using a mechanical impact load and due to commence Monday 5th November. Works will be monitored for Noise & Vibration and action taken should these thresholds be exceeded. We do not expect this to be an issue however please be assured action will be taken as required by the statutory requirements.

We will always endeavour and hope to minimise any impact on our neighbours as we progress.

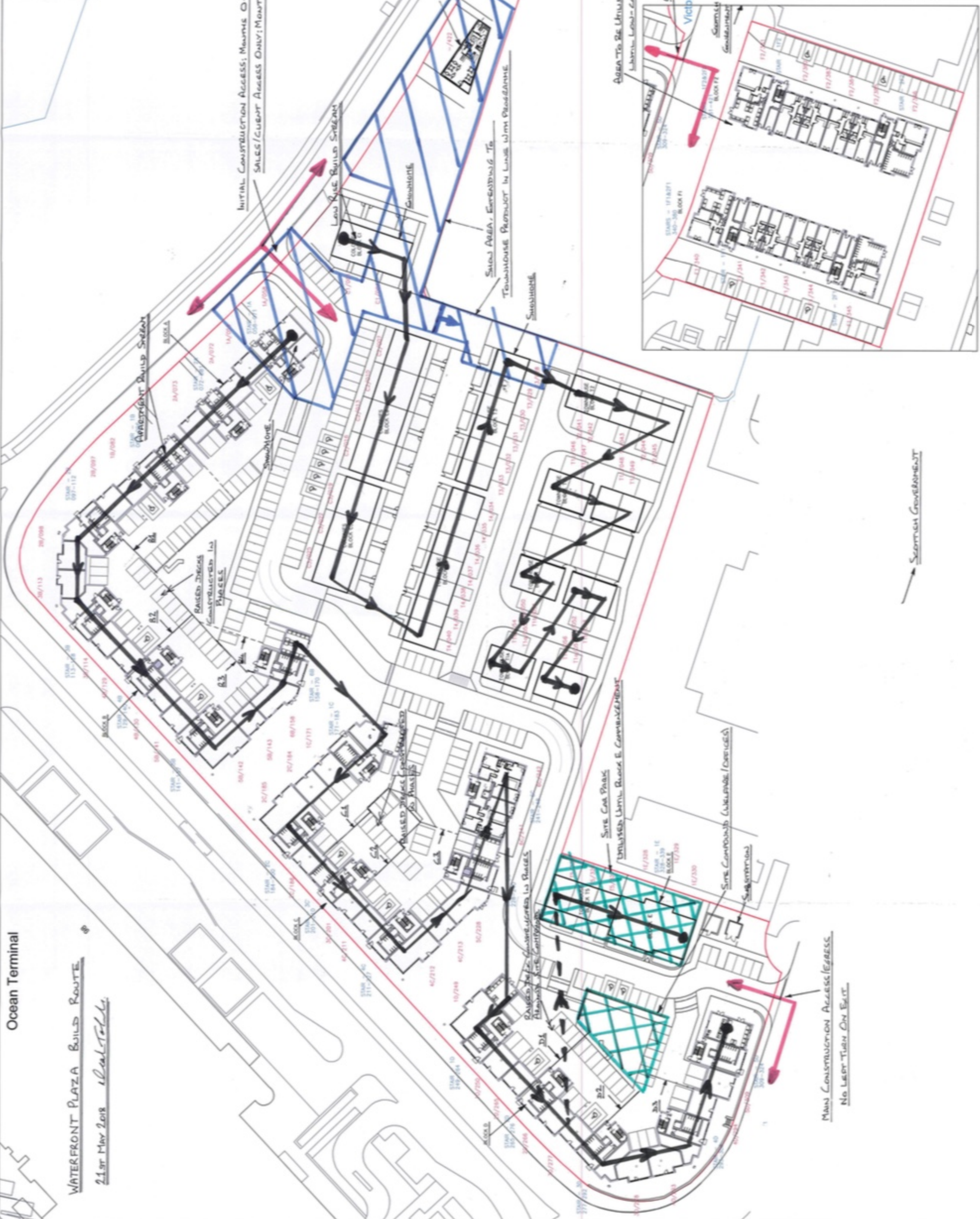
As always, if you would like to get in touch, you can use the following methods:

**Website: <https://www.cala.co.uk/contact-us>
Telephone: 01324 600 000**

Best Wishes from all the CALA staff at Waterfront Plaza

THIS DRAWING IS COPYRIGHT ©
 DO NOT SCALE FROM THIS DRAWING. USE FIGURED DIMENSIONS
 ONLY. ALL DIMENSIONS TO BE CHECKED ON SITE BEFORE WORK
 COMMENCES. DISCREPANCIES TO BE REPORTED TO EMA.
 ORDNANCE SURVEY DRAWING COPYRIGHT ©. ALL RIGHTS RESERVED.
 LICENCE NUMBER 10002443

REVISION	DATE	BY	CHK
1	18/05/18	EMA	EMA
2	02/07/18	EMA	EMA



ema
 ARCHITECTURE + DESIGN

CALA HOMES
 RESIDENTIAL DEVELOPMENT
 WATERFRONT, LEITH
 EDINBURGH

GROUND FLOOR LEVEL
 PLOT REFERENCES

1:500
 1:1000
 1:2000

EMA
 42 Charlotte Square
 Edinburgh EH2 4HQ
 T: 0131 247 1400
 E: info@ema-architects.co.uk

